

# Advanced Battery Monitoring System with Sensor Integration and Remote IoT Access

A. Arshath Ahmed, N. Vinoth, G. Abinesh, G. Rajasekaran,  
M. Mohamed Sameer Ali and S. Suman Rajest

**Abstract---** *The Battery Management System (BMS) project is a sophisticated endeavour designed to revolutionize how we monitor and maintain the health of batteries. At its core, the project harnesses the power of cutting-edge technology, combining advanced sensors with the versatility of an Arduino microcontroller. This integration allows the system to seamlessly track and analyze crucial electrical characteristics such as voltage and current, providing invaluable insights into the battery's state. One of the key components of the BMS project is its utilization of various sensors. These sensors serve as the eyes and ears of the system, continuously gathering data on the battery's performance in real-time. By monitoring parameters like voltage levels and current flow, the BMS can detect any irregularities or anomalies that may indicate potential issues with the battery. This proactive approach to monitoring allows for early detection of problems, enabling prompt intervention and preventive maintenance. However, the innovation of the BMS project doesn't stop there. In addition to its sensor array, the system also incorporates an Internet of Things (IoT) platform. This integration opens up a world of remote monitoring and control possibilities, transforming how we interact with and manage batteries.*

**Keywords---** *The Battery Management System, Remote Monitoring and Control, Transforming and Timely Interventions, Internet of Things (IoT), Arduino Microcontroller, Monitoring Capabilities.*

## I. INTRODUCTION

THE Battery Management System (BMS) project represents a cutting-edge solution in battery technology, offering a comprehensive approach to monitoring and managing battery health [18]. In today's world, where batteries power a wide range of devices and systems, ensuring optimal performance and longevity is paramount. The BMS project leverages advanced sensor technology, including voltage current, to continuously monitor key parameters of the battery [19]. These sensors, interfaced with an Arduino microcontroller, provide real-time data on the battery's electrical characteristics. In

addition to local monitoring capabilities, the Battery Management System (BMS) project incorporates seamless integration with an Internet of Things (IoT) platform, facilitating remote monitoring and control of crucial battery parameters [20]. This pivotal feature is significant, especially when batteries are deployed in remote or hard-to-reach locations, such as off-grid solar power systems or electric vehicles traversing challenging terrains. By harnessing the power of IoT connectivity, the BMS empowers users to remotely access and oversee the batteries' health, performance, and operational status in real-time [21]. This remote monitoring capability allows for proactive management, timely interventions, and swift troubleshooting, minimizing downtime, optimizing efficiency, and ensuring continuous operation of critical systems [22]. By combining sensor technology, microcontroller programming, and IoT connectivity, the BMS project offers a holistic approach to battery management. It ensures that batteries operate within their optimal range, enhancing their performance, efficiency, and lifespan [23].

In a larger mechanical or electrical system, there is a controller called an embedded system that is programmed and operated by an RTOS. This system frequently has computing restrictions that need to be met in real-time. Along with other physical and mechanical components, it is integrated into a whole gadget [24]. Many everyday items are controlled by embedded systems [25]. Embedded system components account for 98% of all microprocessors made. Common characteristics of embedded computers differ from those of general-purpose computers, including reduced power consumption, smaller size, more robust operating ranges, and lower cost per unit [26]. This makes them far more challenging to program and interact with due to their restricted processing capacity (Figure 1).

A. Arshath Ahmed, Department of Computer Science and Engineering, Dhaanish Ahmed College of Engineering, Padappai, Chennai, Tamil Nadu, India.

N. Vinoth, Department of Computer Science and Engineering, Dhaanish Ahmed College of Engineering, Padappai, Chennai, Tamil Nadu, India.

G. Abinesh, Department of Computer Science and Engineering, Dhaanish Ahmed College of Engineering, Padappai, Chennai, Tamil Nadu, India.

G. Rajasekaran, Department of Computer Science and Engineering, Dhaanish Ahmed College of Engineering, Chennai, Tamil Nadu, India.

E-mail: rajasekaran@dhaanishcollege.in

M. Mohamed Sameer Ali, Department of Computer Science and Engineering, Dhaanish Ahmed College of Engineering, Chennai, Tamil Nadu, India.

S. Suman Rajest, Dhaanish Ahmed College of Engineering, Chennai, Tamil Nadu, India.

DOI: 10.9756/BJJAIP/V15I1/BJJ25003

Received: March 2, 2025; Revised: April 6, 2025; Accepted: May 10, 2025; Published: June 07, 2025

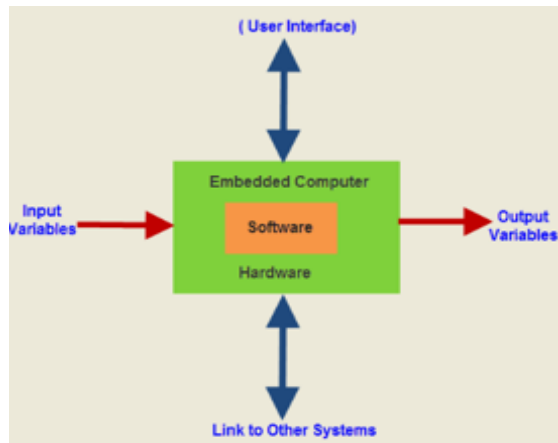


Figure 1: Embedded Computer Sub-Assembly for Electronic Voting Machine

A wide variety of commercial, industrial, automotive, medical, consumer, and even military applications make use of embedded systems [27]. Everything from network telephone switches to user mobile phones is an embedded system in a telecommunications system. Data is routed across network bridges and dedicated routers in computer networking. Digital cameras, MP3 players, mobile phones, game consoles, printers, and GPS receivers are all examples of consumer electronics [28]. Embedded systems let home appliances like dishwashers, washing machines, and microwaves to be more versatile, efficient, and feature-rich [29]. Thermostats in modern HVAC systems are networked to regulate headgear more precisely and efficiently; these hats can vary with the seasons and the time of day. Embedded devices sense and manage a wide variety of things in a home, including lighting, temperature, security, audio/visual, surveillance, and more, using wired and wireless networking [30]. For example, avionics, hybrid cars, magnetic resonance imaging (MRI), and traffic signals are all examples of very complicated systems. A CPU that is embedded into an embedded system is a common feature [31]. Embedded systems are used by a lot of digitally-enabled appliances, microwaves, video recorders, and even certain automobiles [32]. There are embedded systems that come with an OS. Some are highly specialized, leading to the implementation of all logic in a single program. Devices using these embedded systems do more than just provide general-purpose computing; they serve a specialized purpose [33].

When sensors, commonplace objects, and other non-computerized items are able to communicate with one another and process data autonomously, we say that these things are part of the Internet of Things. But there isn't one, all-encompassing explanation [34]. For a long time, people have thought about using networks, sensors, and computers to keep tabs on and manage various equipment [35]. The recent convergence of several technological market trends, however, is hastening the Internet of Things' eventual mainstream adoption [36]. Technologies such as ubiquitous connectivity, IP-based networking's broad adoption, computing economics, miniaturization, and data advancements are among these (Figure 2).

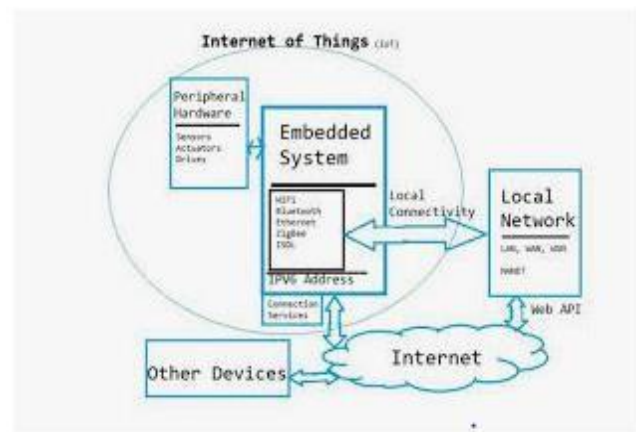


Figure 2: Internet of Things

The Internet of Things (IoT) relies on a combination of software and hardware components [37]. Implementing the interface with the real environment and performing more computationally intensive activities are handled by dedicated hardware components [38]. In order to control the system and understand the inputs, software runs on microcontrollers [39]. The lesson delves into the functions of the system's software and hardware [40]. We go over the typical hardware components and what they do, and we explain how the microcontroller acts as a bridge between the software and hardware [41]. Operating systems enable software and microcontroller interaction in many IoT devices [42]. Next, we'll go over what an operating system does and how it differs from a regular OS in an Internet of Things device [43].

A network of interconnected computing devices, networking gear, and other smart gadgets that can communicate with one another and the internet to gather, transmit, and process data about their immediate surroundings is known as an Internet of Things (IoT) ecosystem [44]. Connecting to an IoT gateway or edge device allows IoT devices to exchange the data they receive from sensors [45]. This data is then forwarded to the cloud for local analysis. On occasion, these gadgets exchange data with one another and take appropriate action based on that data. Although humans can still engage with the devices (e.g., to configure, instruct, or access data), the gadgets can accomplish most tasks autonomously [46]. Internet of Things (IoT) applications have a significant impact on the networking, communication protocols, and connection of web-enabled devices [47]. The Internet of Things (IoT) equips firms with the means to enhance their business strategies by prompting them to reconsider their approaches to industries, markets, and company operations [48]. From the consumer and business ends of the spectrum to the industrial and manufacturing ends, the Internet of Things (IoT) has many practical uses [49]. Many industries can benefit from the Internet of Things, including transportation, telecommunications, and energy [50]. On the consumer side, for instance, you can control your home's temperature, lighting, and electronics from anywhere using your computer, smartphone, or other mobile device if you have a smart thermostat and other linked equipment [51]. Wearables equipped with sensors and software can monitor and assess user activity, relaying that information to other technologies with the

purpose of improving the quality of life for those users [52]. Wearable technology also has applications in public safety, such as enhancing the reaction time of first responders during emergencies by displaying the most efficient routes to a scene or monitoring the vital signs of construction workers or firefighters at potentially dangerous locations [53].

## II. LITERATURE SURVEY

The air's temperature fluctuates daily. As a result of environmental factors, electric car temperatures fluctuate. Everyday life is greatly impacted by batteries, which are both weighty and crucial. It has found use in power plants, renewable energy, electric cars, and electrical fields [5]. Electric vehicles were the first to use battery technology, which has the dual purpose of reducing fuel use and emissions. Using cooling technologies, this article monitors and controls the battery [6]. The temperature is constantly recorded since an Arduino microcontroller has been watching this battery [7]. Keeping an eye on the battery's health and temperature level extends the life of the battery system, which is quite helpful in today's environment thanks to thermal management. In order to keep the temperature of the battery system under control, the right cooling measures are employed [1].

A global effort is under way to lessen environmental damage by cutting down on or eliminating the release of greenhouse gases [8]. The development of electric vehicle (EV) technology has been a great boon in this regard. Battery management systems (BMS) and energy storage systems (ESS) continue to be major obstacles for electric vehicles. This research compares and contrasts several ESSs and the difficulties they provide, as well as discussing energy storage strategies utilized in these ESSs for Evs [9]. The significance of monitoring the battery's health, the numerous methods used for this purpose, and the various features of battery management systems (BMS) are all covered in this paper [2].

Many consumer items and portable electronics use rechargeable batteries. This paper introduces a UCD BMS, which is a system for managing the charging and discharging of batteries [10]. It uses distributed battery units, so some can discharge their energy while the vehicle is running, and other units can be charged through energy harvesting using technologies like photovoltaics [11]. All four modules that make up the suggested UCD BMS—a smart battery, a PBM, a charging, and a discharging—are essential. The PBM module incorporates control circuitry and a PPA module, which are utilized by switching circuits [12]. The control circuitry in the PPA module activates the appropriate switches, creating two paths: one for the battery and another for charging or discharging. When it's time to charge or discharge the smart battery units, the charger or load that was part of the charging or discharging path is hooked up to the battery path [13]. The smart battery module's total power efficiency is improved by the suggested PBM, which offers several output voltages for increased user flexibility and better usage of discharge energy. Balanced batteries and fault-tolerant BMS designs are two other areas where the PBM finds use [3].

Most people think that EVs, or electric vehicles, are the best option to replace cars powered by IC engines. Rapid

advancements are being made in electric vehicle (EV) technology, with battery technology being a key element in this field [14]. Battery management system (BMS) and battery performance are the major determinants of electric vehicle (EV) performance. Because of its lightweight design, high energy density, and rapid charging and discharging capabilities, the lithium-ion (Li-ion) battery has recently found widespread use in electric vehicles [15]. The BMS is designed to meet challenges such as energy management of the battery, reduction of heating-time at low temperatures, and enhancement of remaining-useful life (RUL) with accuracy of prediction, all while considering the dynamic performance, economy, safety, and environmental friendliness of the Evs [16]. In order to keep the battery reliable and secure, the BMS supervises and manages it. An important part of a smart farm's energy management is its intelligent battery management system. It shows the farm-wide energy demand, the PV system's available electricity, and the battery storage capacity [17]. But that energy monitoring system has to be effective, particularly when it comes to distributing the captured energy as efficiently as possible. An effective system is also required because loads will originate from multiple sources, including vision, irrigation, communication, and aquaponics [4].

## III. PROJECT DESCRIPTION

In traditional battery management approaches, monitoring is often limited to periodic checks of voltage levels using multimeters and manual temperature measurements. These methods are time-consuming, labour-intensive, and provide limited insights into the battery's health [54]. Without continuous monitoring and real-time data collection, potential issues such as overcharging, over-discharging, or overheating may go unnoticed, leading to reduced battery performance and lifespan [55]. The proposed Battery Management System (BMS) aims to enhance battery monitoring and management by integrating voltage and current sensors for real-time data display, an Arduino microcontroller for data processing, and an IoT platform for remote monitoring and control [56]. The system continuously monitors the battery's electrical characteristics and temperature, displaying the data [57]. Additionally, by using Machine Learning Techniques, we can predict the battery efficiency as well added to that the IoT platform enables remote monitoring and control of the battery parameters, ensuring optimal performance and longevity [58]. Overall, the BMS offers a comprehensive solution for efficient and safe battery management compared to traditional methods [59].

A wide variety of approaches exist for measuring variable current flow, which is an essential component of many electronic systems [60]. One device that can detect and calculate a physical phenomenon is a sensor. Put simply, it provides a quantifiable demonstration of the awe on a specific scale or spectrum [61]. A current sensor is an instrument that detects the amount of electrical current flowing through a system or a wire and produces an indication based on that value [62]. The information could be utilized for control, to display the current reading in an ammeter, or to store it for later classification in a data gathering system [63]. The present sensor is "disturbing" since it potentially impacts system

performance due to its incorporation of certain sensors. Many industries, from manufacturing to transportation to home electronics, rely on accurate measurements of alternating or direct current, and there is a vast array of current sensors available to do just that [64].

In order to obtain an output voltage that is directly proportional to the current in the intended path, a current sensor must be able to detect and convert current [65]. A voltage drop occurs across the current's path as it flows through the circuit [66]. A magnetic field is also created close to the conductor that is conducting the current. Current methods for designing sensors make use of the aforementioned phenomena [67]. The process of creating a voltage signal proportional to the current flowing through a circuit is known as current sensing. Inserting a resistor into the current route to be measured is a common method for doing so. Subsequently, the detected resistor can be connected in series with the circuit at any point [68]. There can be a load or a switch. Hence, current detecting devices should be thought of as converters from current to voltage [69].

In order to reduce power losses, it is necessary to take low values. In most cases, the current measured values are proportional to the circuit's threshold voltage, since the latter is wholly dependent on the former for its operation. When it comes to precision, temperature is the most important coefficient element of resistance [70]. In order to keep the operation running smoothly, utilize a resistor whose temperature coefficient resistance is close to zero. Permissible power at various temperatures is given by the power derating curve [71]. Nevertheless, the energy rating curve needs to be taken into account because peak power capability is a function of energy [72]. Because of Ohm's law, direct current sensing works [73]. A voltage across the shunt resistor is produced in direct proportion to the current flowing through the system load when a shunt resistor is arranged in series with the load [74]. The voltage across the shunt could be measured using a differential amplifier, such as an operational, difference, or current shunt amplifier [75]. It is usually used when the load current is less than 100A [76]. Both Ampere's and Faraday's laws are necessary for indirect current sensing [77]. An induced voltage across a loop encircling a current-carrying conductor is directly proportional to the current itself [78]. This sensing technology is used for load currents ranging from 100A to 1000A. A common mode voltage with a low input is this. Connecting the sensing resistor to the load and ground is what low-side current sensing is all about [79]. The fact that the common-mode voltage is low relative to the ground makes this a favorable situation (Figure 3).

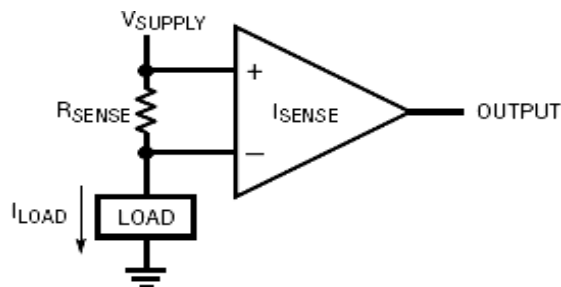


Figure 3: High Side Current Sensing

High-side sensing is desirable because it directly monitors the current delivered by the supply, which considers the identification of load shorts [80]. The test is that the amplifier's input common-mode voltage range must have the load's supply voltage as a feature [81]. Finally, out is measured across the current sensed device and load is grounded. The figure below represents the current curves on the primary and secondary sides [82]. A 12-volt system refers to an electrical system where the voltage is maintained at 12 volts [83]. This voltage standard is commonly used in various applications due to its balance between performance, efficiency, and safety. Here are some key points about the 12-volt system [84]: In a 12-volt system, the electrical components and devices are designed to operate within a voltage range of approximately 10.5 to 14 volts. This range ensures proper functionality while allowing for variations in the power supply [85]. The 12-volt system is widely used in automotive and marine applications. Most vehicles, including cars, trucks, motorcycles, and boats, operate on a 12-volt electrical system. Standardizing voltage levels across vehicles simplifies the design and compatibility of electrical components. Lead-acid batteries, commonly used in automotive and other applications, are often rated at 12 volts [87]. These batteries provide the primary source of electrical power in a 12-volt system. For example, a car battery typically has a nominal voltage of 12 volts. Power supplies for electronic devices and systems often provide a 12-volt output [88]. This includes power adapters for various consumer electronics, LED lighting systems, and other low to moderately power-consuming devices. Some portable electronic devices, such as certain radios, camping equipment, and small appliances, may operate on 12-volt power sources. This allows compatibility with automotive power outlets commonly found in cars and recreational vehicles [86].

While 12 volts can still deliver sufficient power for many applications, it is considered a low voltage level [89]. This lower voltage reduces the risk of electrical shock and is generally safer for handling than higher voltage systems [91]. Many hobbyist and DIY electronics projects use 12-volt systems [90]. This voltage level balance provides enough power for various components and ensures hobbyists' ease of use and safety [92]. Numerous electrical components, such as relays, motors, LEDs, and sensors, are readily available in 12-volt variants [93]. This makes it convenient to build and integrate components within a 12-volt system [94]. When working with a 12-volt system, it's essential to consider the power requirements of the devices and components to ensure that the system can provide sufficient current and voltage [95]. Proper fusing and safety precautions should also be observed to prevent electrical hazards (Figure 4).

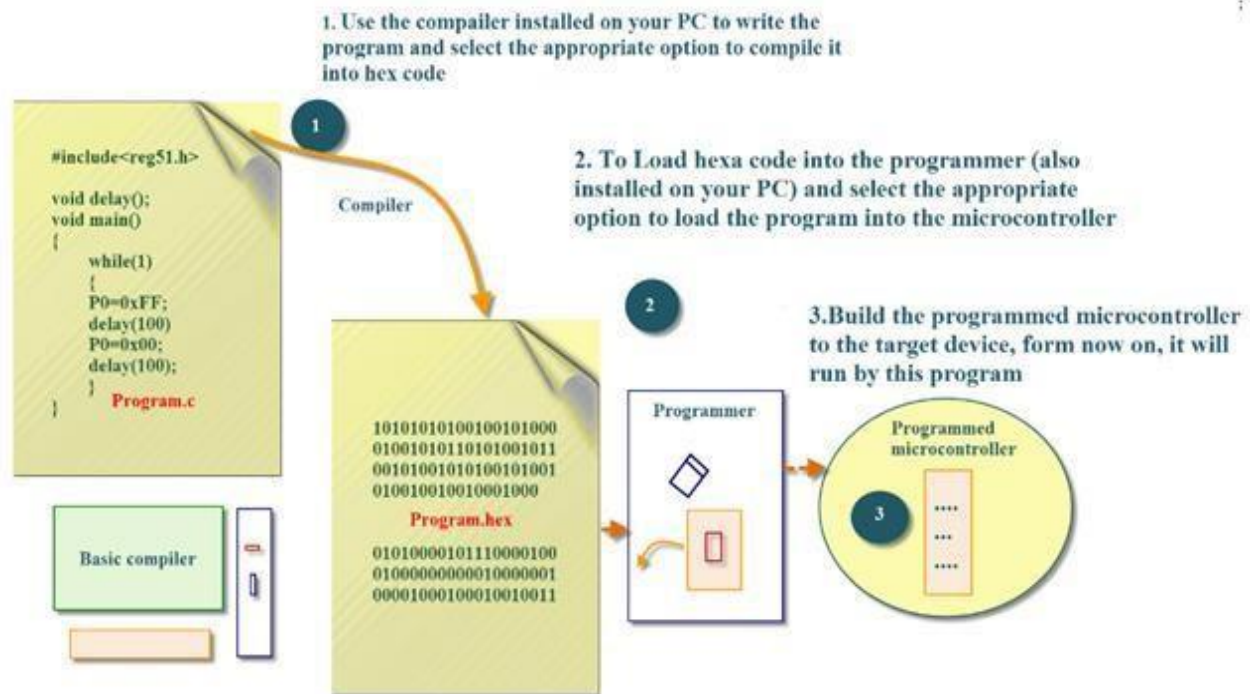


Figure 4: Embedded C

Programming languages consist of collections of one or more functions, which are collections of statements used to do certain tasks [96]. The majority of buyers have some familiarity with computer applications. On the other hand, embedded software is typically more hidden but no less complex [97]. In contrast to application software, embedded software has predetermined hardware needs and capabilities, and it is very controlled when it comes to integrating third-party software or hardware [98].

As part of the manufacturing process, embedded software must incorporate all necessary device drivers that are tailored to the particular hardware [99]. Which central processing unit (CPU) and which chipset is used greatly affects the software [100]. The majority of embedded software engineers can deduce the purpose of registers and communication systems by perusing component data sheets and drawings. Tools for manipulating bits and converting between binary, hexadecimal, and decimal are helpful [101]. Even though computers rarely use web applications, they can receive XML files and other forms of output and display them. Common features such as SQL databases and file systems with directories are not included [102]. A cross-compiler is an essential tool in software development; it operates on a computer but generates code that is executable on the target device [103]. Use of a JTAG, SWD, or in-circuit emulator is necessary for debugging. It is common practice for software engineers to have access to the whole operating system (OS) source code. Memory and random access memory sizes might differ greatly.

A 16 KB Flash, 4 KB RAM, and 8 MHz CPU are all that certain systems need to function. Other systems are capable of competing with modern computers. Because of these space constraints, C or embedded C++ are being used more frequently than C++. Not many programs make use of interpreted languages like Java (Java ME Embedded 8.3[9] is available for platforms like Raspberry Pi and Intel Galileo Gen. 2) or BASIC (however programs like Parallax Propeller can use compiled BASIC). Alternatively, there is an implementation of Python 3 that is tailored for microcontrollers, specifically Micro-Python. This code is compatible with 32-bit ARM-based microcontrollers (like BBC micro: bit) and 16-bit PIC microcontrollers. Crucial is the communication between processors and between each processor and its external components. Among the most used protocols are USB, serial ports, I<sup>2</sup>C, and SPI, in addition to direct memory addressing. Some businesses, like CMX Systems and Inter Niche Technologies, make their embedded system communications protocols available as closed source. Many protocols, like uIP and lip, are open-source.

#### Anaconda Navigator

The Anaconda distribution for Python and R is a free, open-source, and simple-to-install software package. Data science, machine learning, statistical analysis, and scientific computing all find a home in Anaconda. Released in October 2018, Anaconda 5.3 is the most recent distribution. It comes with the Anaconda package, an environment manager, and a library of over a thousand open-source programs, many of which are lengthy and come with free community support (Figure 5).

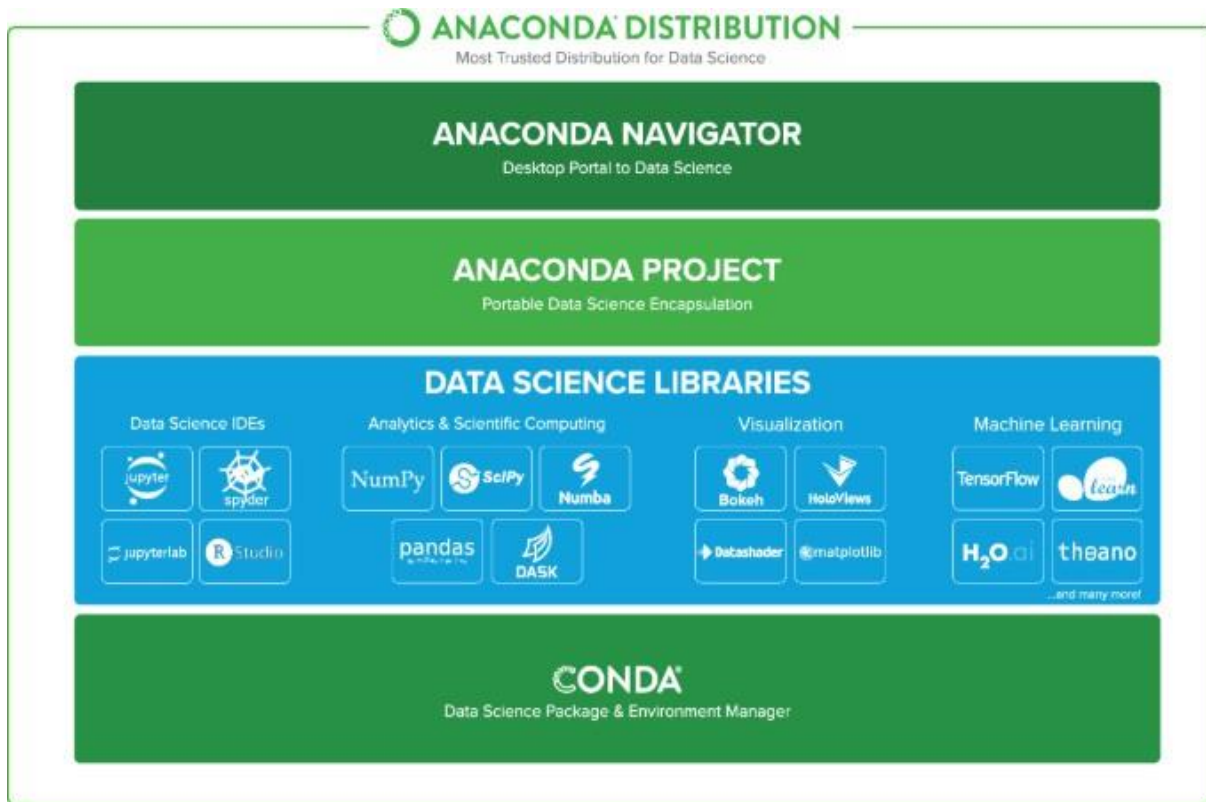
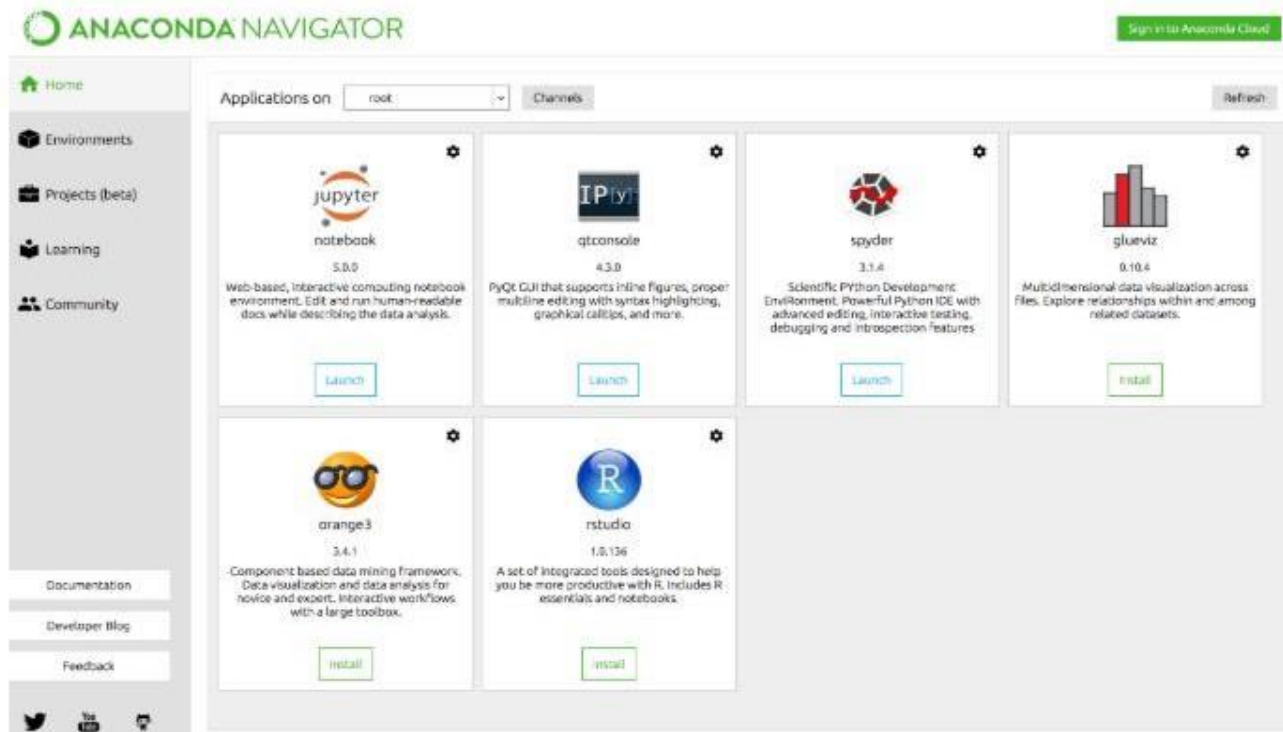


Figure 5: Anaconda Navigator

One component of the Anaconda distribution is the Anaconda Navigator, a GUI for desktop computers. It provides an easy way to manage Anaconda packages, environments, and channels without having to use command-line commands, and

it lets us start apps that are part of the Anaconda distribution. Linux, macOS, and Windows users can all take advantage of it (Figure 6).



Anaconda Navigator

Figure 6: Anaconda

Compiled with the Latest Python release: Anaconda 5.3 is compiled with Python 3.7, taking advantage of Python's speed and feature improvements. Anaconda's reliability has been improved in the latest release by capturing and storing the package metadata for installed packages. The Intel Math Kernel Library 2019 for Deep Neural Networks (MKL 2019) has been introduced in Anaconda 5.3 distribution. Users deploying TensorFlow can make use of MKL 2019 for Deep Neural Networks. These Python binary packages are provided to achieve high CPU performance. Over 230 packages have been updated and added to the new release. There is a casting bug in Numpy with Python 3.7, but the team is currently patching it until Numpy is updated. Visual Studio Code (VS Code) has been instrumental in developing our smart hydroponic plant monitoring system, providing our team with a seamless and efficient integrated development environment (IDE). Its user-friendly interface and lightweight design have ensured smooth performance, even with our complex codebase.

The integrated terminal has allowed us to interact with the system's backend and front-end components effortlessly, enabling quick iterations and troubleshooting. VS Code's extensive language support has been invaluable, accommodating our varied development needs with languages like Python for backend logic, JavaScript for front-end interfaces, and specialized libraries for machine learning. Git integration within VS Code has facilitated version control and collaborative development, allowing us to stage, commit, push, and pull changes directly from the IDE. Additionally, the vast extensions marketplace has enabled us to customize our environment with tools like IntelliSense for code completion, GitLens for enhanced Git functionalities, and the Python extension for tailored Python development. Debugging tools such as breakpoints and step-through debugging have been crucial in identifying and resolving issues efficiently. The Live Share extension has promoted real-time collaboration among team members, which is essential for remote work scenarios. Finally, task automation with tasks and runners has streamlined our workflow, automating repetitive tasks and building processes. In summary, the integration of Visual Studio Code has significantly contributed to the success of our project, enhancing our productivity, code management, collaboration, and overall development process for our smart hydroponic plant monitoring system.

Machine learning is an application of artificial intelligence (AI) that allows systems to learn and improve from experience without being explicitly programmed automatically. Machine learning focuses on developing computer programs that can access and use data to learn for themselves. The learning process begins with observations or data, such as examples, direct experience, or instruction, to look for patterns in data and make better decisions in the future based on the examples we provide. The primary aim is to allow the computers to learn automatically without human intervention or assistance and adjust actions accordingly.

Supervised and unsupervised machine learning algorithms exist. Supervised machine learning algorithms can predict future events using tagged examples and prior data. The learning method predicts output values using an inferred

function from a training dataset. After enough training, the system can target new inputs. The learning algorithm can also check its output against the expected output to detect mistakes and fix the model. Unsupervised machine learning algorithms train on unclassified or unlabeled data. Unsupervised learning examines how computers infer a function to describe a hidden structure from unlabeled input. The system analyzes data and draws conclusions to explain hidden structures from unlabeled data, but it doesn't determine the proper output. Since they train with a little amount of labelled data and a lot of unlabeled data, semi-supervised machine learning methods fall between supervised and unsupervised learning. Systems using this strategy can greatly enhance learning accuracy. When tagged data requires experienced and appropriate resources to train/learn from, semi-supervised learning is used. Additional resources are rarely needed to obtain unlabeled data.

Reinforcement machine learning algorithms operate and find errors or rewards in their surroundings. The most important reinforcement learning traits are trial-and-error search and delayed reward. This technology lets machines and software agents automatically identify the best behavior for a given environment to maximize performance. To learn the appropriate action, the agent needs simple incentive feedback, called the reinforcement signal. Machine Learning boosts creativity and productivity. Machine Learning lets you delegate hard or boring tasks to the computer, from scanning, storing, and filing bills to organizing and editing photos. Besides these simple jobs, self-learning machines can execute sophisticated ones. These include error pattern recognition. This is a huge benefit, especially in manufacturing, which requires constant, error-free production. While professionals may not know where or how a plant fleet production issue occurs, Machine Learning can help spot it early. Saves time and money. The medical industry currently uses self-learning programs. Later, after "consuming" massive amounts of data (medical papers, studies, etc.), applications can alert him if his doctor prescribes an intolerable prescription. This "knowledge" allows the software to suggest alternatives that consider the patient's genetic needs.

Virtual assistants like Siri, Alexa, and Google Now are popular. They help find information when spoken to. Just activate them and ask, "What is my schedule for today?" Like "What are the flights from Germany to London?" Your assistant searches for the information, recalls your questions, or commands other resources (like phone apps) to gather it. You may even tell assistants to "Set an alarm for 6 AM next morning" or "Remind me to visit the Visa Office Day after tomorrow". Machine learning helps personal assistants gather and refine data based on your past interactions. This data set is used to generate personalized results. Virtual Assistants available on several platforms. Amazon Echo and Google Home smart speakers; Samsung Bixby on S8 Mobile.

All of us use GPS navigation. Our positions and velocities are saved at a central server for traffic management while we accomplish so. Current traffic maps are created using this data. This reduces traffic and analyzes congestion, but fewer automobiles have GPS. Machine learning estimates congested areas based on daily encounters. App estimates cab fare when booking. How do they reduce diversions when sharing

services? Answer: machine learning. Uber ATC engineering head Jeff Schneider says they utilize ML to forecast rider demand to set price surge hours in an interview. ML is important throughout the service cycle. Imagine one person monitoring many video cameras! The job is hard and boring. Thus, training computers for this task makes logical. Today, AI-powered video surveillance systems can prevent crimes. They record odd behaviors like standing still, stumbling, and dozing on benches. Thus, the system can notify attendants to prevent accidents. Reporting and verifying such acts improves surveillance services. This happens when backend machine learning works.

Machine learning helps social media firms personalize news feeds and target ads. Here are a few social media features you must notice, utilize, and adore without understanding they are ML applications. Others You May Know: Machine learning uses experience to understand. Facebook tracks your friends, frequently visited profiles, interests, workplace, and shared groups. Facebook suggests mates based on ongoing learning. Facebook automatically recognizes a buddy when you share a photo of yourself with them. Facebook recognizes distinctive traits and poses in the photo and connects them with your friends. The backend procedure is sophisticated and handles precision, while the front end seems like a simple ML application. Computer Vision relies on machine learning to extract meaningful information from photos and movies. Pinterest recommends comparable pins based on machine vision of visual objects. Multiple spam filters are used by email clients. To keep spam filters updated, machine learning is used. Rule-based spam filtering misses spammers' latest techniques. Multi-Layer Perceptron, C4.5 Decision Tree Induction is ML-powered spam screening. Over 325,000 malware are found daily, and each version is 90–98% similar. Machine-learning-powered system security programs recognize code patterns. Therefore, they easily detect and guard against new malware with 2–10% variation.

Today, many websites allow users to chat with customer service while browsing. Not every website provides a live associate to address questions. Usually, you talk to a chatbot. These bots take website data and display it to clients. Chatbots improve over time. They comprehend user inquiries better and provide better replies thanks to machine learning algorithms. Google and others employ machine learning to improve search results. Every time you search, backend algorithms track your response. Opening the top results and staying on the page long makes the search engine presume the results follow the query. If you reach the second or third page of search results but do not open any, the search engine calculates that the results did not meet the requirement. Thus, backend algorithms increase search results.

#### IV. CONCLUSION

The Battery Management System (BMS) project represents a holistic approach to monitoring and managing the health of batteries. The system provides real-time data on the battery's electrical characteristics and temperature by leveraging voltage current, an Arduino microcontroller and the Algorithms. This information is crucial for ensuring the battery's optimal

performance and longevity. Furthermore, integrating an IoT platform enables remote monitoring and control, enhancing the system's efficiency and usability. Overall, the BMS project offers a comprehensive solution for effectively managing batteries in various applications. The future scope for Battery Management Systems (BMS) is vast and promising, spanning various domains. Advancements in energy storage technologies, such as solid-state and lithium-sulfur batteries, will drive the evolution of BMS towards optimizing performance and safety. Integration with renewable energy systems will be critical for managing energy storage, balancing supply and demand, and ensuring grid stability. Artificial Intelligence and Machine Learning will significantly enhance predictive maintenance, optimize charging strategies, and improve battery performance.

#### REFERENCES

- [1] Wu, B., Widanage, W. D., Yang, S., & Liu, X. (2020). Battery digital twins: Perspectives on the fusion of models, data and artificial intelligence for smart battery management systems. *Energy and AI*, 1, 100016. <https://doi.org/10.1016/j.egyai.2020.100016>.
- [2] De Guia, J. D., Concepcion, R. S., Calinao, H. A., Lauguico, S. C., Dadios, E. P., & Vicerra, R. R. P. (2020). Application of ensemble learning with mean shift clustering for output profile classification and anomaly detection in energy production of grid-tied photovoltaic system. In *2020 12th International Conference on Information Technology and Electrical Engineering (ICITEE)* (pp. 286-291). IEEE.
- [3] Anala, V. S. A., Pothu, A. R., & Chintapalli, S. (2024). Enhancing preventive healthcare with wearable health technology for early intervention. *FMDB Transactions on Sustainable Health Science Letters*, 2(4), 211–220.
- [4] Anala, V. S. A., & Chintapalli, S. (2024). Scalable data partitioning strategies for efficient query optimization in cloud data warehouses. *FMDB Transactions on Sustainable Computer Letters*, 2(4), 195–206.
- [5] Ansari, N., Singh, G., Singh, R., & Sheetal. (2025). Innovative herbal tea formulation using *Holarrhena antidysenterica*, *Emblca officinalis*, and *Stevia*: Nutritional and phytochemical analysis. *Journal of Neonatal Surgery*, 14(6), 381–389.
- [6] Rahman, M. H., Islam, T., Hossen, M. E., Chowdhury, M. E., Hayat, R., Shovon, M. S. S., & Sunny, A. R. (2024). Machine Learning in Healthcare: From Diagnostics to Personalized Medicine and Predictive Analytics. *Integrative Biomedical Research (Former Journal of Angiotherapy)*, 8(12), 1-8.
- [7] Chowdhury, R., Fahad, M. A. H., Alam, S. S., Tusher, M. I., Rana, M. N. U., Ahmed, E., & Mahin, M. R. H. (2020). Database Management in the Era of Big Data: Trends, Challenges, and Breakthroughs. *Pathfinder of Research*, 1(1), 15-15. <https://doi.org/10.69937/pf.por.1.1.140>.
- [8] Mahin, M. R. H., Ahmed, E., Akhi, S. S., Fahad, M. A. H., Tusher, M. I., Chowdhury, R., & Rana, M. N. U. (2021). Advancements and Challenges in Software Engineering and Project Management: A 2021 Perspective. *Pathfinder of Research*, 2(1), 15-15. <https://doi.org/10.69937/pf.por.2.1.38>.
- [9] Fahad, M. A. H., & Chowdhury, R. (2022). Evolution and Future Trends in Web Development: A Comprehensive Review. *Pathfinder of Research*, 3(1), 13-13. <https://doi.org/10.69937/pf.por.3.1.35>.
- [10] Islam, A. R. M. T., Uddin, M. N., Joy, M. F. R., Proshad, R., Kormoker, T., Anik, A. H., & Alshehri, M. A. (2025). Tracing sources-oriented ecological risks of metal (loid) s in sediments of anthropogenically-affected coastal ecosystem from northeast bay of Bengal. *Marine Pollution Bulletin*, 211, 117354. <https://doi.org/10.1016/j.marpolbul.2024.117354>.
- [11] Islam, A. R. M. T., Abdullah-Al Mamun, M., Hasan, M., Aktar, M. N., Uddin, M. N., Siddique, M. A. B., & Senapathi, V. (2025). Optimizing coastal groundwater quality predictions: A novel data mining framework with cross-validation, bootstrapping, and entropy analysis. *Journal of Contaminant Hydrology*, 269, 104480. <https://doi.org/10.1016/j.jconhyd.2024.104480>.
- [12] Abdullah-Al Mamun, M., Islam, A. R. M. T., Aktar, M. N., Uddin, M. N., Islam, M. S., Pal, S. C., & Senapathi, V. (2024). Predicting groundwater phosphate levels in coastal multi-aquifers: A geostatistical and data-driven approach. *Science of the Total Environment*, 953, 176024.

- <https://doi.org/10.1016/j.scitotenv.2024.176024>.
- [13] Uddin, M. N., Saha, G. C., Hasanath, M. A., Badsha, M. A. H., Chowdhury, M. H., & Islam, A. R. M. T. (2023). Hexavalent chromium removal from aqueous medium by ternary nano-adsorbent: A study of kinetics, equilibrium, and thermodynamic mechanism. *Plos one*, *18*(12), e0290234. <https://doi.org/10.1371/journal.pone.0290234>
  - [14] Saha, G. C., Hasanath, M. A., Uddin, M. N., & Hasan, M. (2022). Sustainable utilization of textile dyeing sludge and coal fly ash by brick production through traditional kilns. *Nature Environment and Pollution Technology*, *21*(3), 971-980.
  - [15] Uddin, M. N., Saha, G. C., Hasanath, M. A., Rahman, M. T., & Rashid, M. M. (2022). Development and Characterization of Novel Mn-Fe-Sn Ternary Nanoparticle by Sol-Gel Technique. In *Advances in Civil Engineering: Select Proceedings of ICACE 2020* (pp. 45-54). Springer Singapore.
  - [16] Rajavel, V. (2025). Integrating Power-Saving Techniques into Design for Testability of Semiconductors for Power-Efficient Testing. *The American Journal of Engineering and Technology*, *7*(3), 243-251.
  - [17] Rajavel, V. (2025). Novel machine learning approach for defect detection in DFT processes. *ASRJETS-Journal*, *101*(1), 325-334.
  - [18] Rajavel, V. (2025). Optimizing semiconductor testing: Leveraging stuck-at fault models for efficient fault coverage. *International Journal of Latest Engineering Management Research (IJLEMR)*, *10*(2), 69-76.
  - [19] Miah, M. S., & Islam, M. S. (2022). Big Data Analytics Architectural Data Cut off Tactics for Cyber Security and Its Implication in Digital forensic. In *2022 International Conference on Futuristic Technologies (INCOFT)* (pp. 1-6). IEEE.
  - [20] Obaida, M. A., Miah, M. S., & Horaira, M. A. (2011). Random Early Discard (RED-AQM) Performance Analysis in Terms of TCP Variants and Network Parameters: Instability in High-Bandwidth-Delay Network. *International Journal of Computer Applications*, *27*(8), 40-44.
  - [21] Srivastava, A. (2024). Use of AI/ML in data security. *Journal of Artificial Intelligence, Machine Learning and Data Science*, *2*(2), 1-3.
  - [22] Srivastava, A. (2020). WFH impact on work culture and future of workplace. *International Journal of Innovative Research and Creative Technology*, *8*(6), 1-8.
  - [23] Kashyap, G. (2025). Neural architecture search (NAS): Exploring the trade-offs in automated model design and its impact on deep learning performance. *International Journal of Innovative Research in Engineering & Multidisciplinary Physical Sciences*, *13*(2), 1-12.
  - [24] Kashyap, G. (2020). Large language models and their ethical implications: The role of models like GPT and BERT in shaping future AI applications and their risks. *International Journal of Innovative Research in Creative Technology*, *6*(6), 1-5.
  - [25] Kashyap, G. (2021). AI for epidemiology: Using AI to predict and track the spread of diseases like COVID-19. *International Journal of Innovative Research in Multidisciplinary Field*, *3*(6), 1-10
  - [26] Chandrashekar, B., Boggavarapu, S., Pundir, S., Yosepu, C., Chepyala, S., & Manikandan, G. (2023). Machine learning prediction approach for financial forecast system in stock exchange marketing management. In *2023 6th International Conference on Contemporary Computing and Informatics (IC3I)* (pp. 1433-1438). Gautam Buddha Nagar, India. IEEE.
  - [27] Boggavarapu, S., Ramkumar, G., Gedamkar, P. R., Kaneria, A., Pundir, S., & Selvameena, R. (2024). Research on unmanned artificial intelligence based financial volatility prediction in international stock market. In *2024 5th International Conference on Recent Trends in Computer Science and Technology (ICRTCST)* (pp. 16-20). Jamshedpur, India. IEEE.
  - [28] Gokulakrishnan, S., Chakrabarti, P., Hung, B. T., & Shankar, S. S. (2023). An optimized facial recognition model for identifying criminal activities using deep learning strategy. *International Journal of Information Technology*, *15*(7), 3907-3921.
  - [29] Kosuru, S. N. V. J. D., Kumar, R. P., Kumar, R., Gokulakrishnan, S., Sethy, A., & Sreenivas, V. (2025). A comparative assessment for examining the performance of reconfigurable multiband MIMO antennas for communication systems. *Journal of Information Systems Engineering and Management*, *10*(10s).
  - [30] Kumar, R., Gokulakrishnan, S., Kosuru, S. D., & Rajesh, T. R. (2025). An efficient fuzzy logic and artificial intelligence based optimization strategy for bigdata healthcare system. *Edelweiss Applied Science and Technology*, *9*(3), 1593-1620.
  - [31] Gokulakrishnan, S., & Gnanasekar, J. M. (2019). Efficient and privacy for data integrity and data replication in cloud computing. *International Journal of Innovative Technology and Exploring Engineering*.
  - [32] Gokulakrishnan, S., & Gnanasekar, J. M. (2020). Data integrity and recovery management in cloud systems. In *Proceedings of the 4th International Conference on Inventive Systems and Control (ICISC)* (pp. 645-648). Coimbatore, India.
  - [33] Jaber, Z. H., Ihsan, M., Gokulakrishnan, S., Alshaibani, H. A., Alsalamy, F. H., & Al-Aboudy, H. (2024). Distributed Self-Localization with Improved Optimization with Machine Learning in IoT Applications. In *2024 Asian Conference on Communication and Networks (ASIANComNet)* (pp. 1-7). IEEE.
  - [34] Chahal, A., Addula, S. R., Jain, A., Gulia, P., & Gill, N. S. (2024). Systematic Analysis based on Conflux of Machine Learning and Internet of Things using Bibliometric analysis. *Journal of Intelligent Systems & Internet of Things*, *13*(1), 196-224.
  - [35] Tyagi, A. K., & Addula, S. R. (2024). Artificial Intelligence for Malware Analysis: A Systematic Study. *Artificial Intelligence-Enabled Digital Twin for Smart Manufacturing*, 359-390.
  - [36] Pati, A., Reddy, S., Panigrahi, A., Sahu, B., Nayak, D. S. K., & Dash, M. (2025). Artificial intelligence in improving disease diagnosis. *Artificial Intelligence in Medicine and Healthcare*, 24-49.
  - [37] Nadella, G. S., Addula, S. R., Yadulla, A. R., Sajja, G. S., Meesala, M., Maturi, M. H., & Gonaygunta, H. (2025). Generative AI-Enhanced Cybersecurity Framework for Enterprise Data Privacy Management. *Computers*, *14*(2), 55. <https://doi.org/10.3390/computers14020055>.
  - [38] Sajja, G. S., & Addula, S. R. (2024). Automation Using Robots, Machine Learning, and Artificial Intelligence to Enhance Production and Quality. In *2024 Second International Conference Computational and Characterization Techniques in Engineering & Sciences (IC3TES)* (pp. 1-4). IEEE.
  - [39] Misra, N. K., Das, S., Satpathy, S., Addula, S. R., & Trivedi, M. C. (2024). Covid-19 pandemic: A worldwide critical review with the machine learning model-based prediction. *Journal of the Institution of Engineers (India): Series B*, *106*(1), 339-349.
  - [40] Almotairi, S., Addula, S. R., Alharbi, O., Alzaid, Z., Hausawi, Y. M., & Almotairi, J. (2024). Personal Data Protection Model in IOMT-Blockchain on Secured Bit-Count Transmutation Data Encryption Approach. *Fusion: Practice & Applications*, *16*(1), 152-170.
  - [41] Dontu, S., Addula, S. R., Pareek, P. K., Vallabhaneni, R., & Fallah, M. H. (2024). A feature selection based decisive red fox algorithm with deep learning for protecting cybersecurity network. In *2024 International Conference on Intelligent Algorithms for Computational Intelligence Systems (IACIS)* (pp. 1-7). Hassan, India.
  - [42] Dontu, S., Addula, S. R., Pareek, P. K., Vallabhaneni, R., & Adnan, M. M. (2024). Attack detection from Internet of Things using TPE based self-attention based bidirectional long-short term memory. In *2024 International Conference on Intelligent Algorithms for Computational Intelligence Systems (IACIS)* (pp. 1-6). Hassan, India.
  - [43] Menon, S., Addula, S. R., Parkavi, A., Subbalakshmi, C., Dhandayuthapani, V. B., Pokkuluri, K. S., & Soni, A. (2024). Streamlining Task Planning Systems for Improved Enactment in Contemporary Computing Surroundings. *SN Computer Science*, *5*(8), 993. <https://doi.org/10.1007/s42979-024-03267-5>.
  - [44] Addula, S. R., & Tyagi, A. K. (2024). Future of Computer Vision and Industrial Robotics in Smart Manufacturing. *Artificial Intelligence-Enabled Digital Twin for Smart Manufacturing*, 505-539.
  - [45] Addula, S. R., & Sajja, G. S. (2024). Automated machine learning to streamline data-driven industrial application development. In *Proceedings of the 2024 Second International Conference on Computational and Characterization Techniques in Engineering & Sciences (IC3TES)* (pp. 1-4).
  - [46] Addula, S. R., Tyagi, A. K., Naithani, K., & Kumari, S. (2024). Blockchain-empowered internet of things (IoTs) platforms for automation in various sectors. In *Artificial Intelligence-Enabled Digital Twin for Smart Manufacturing* (pp. 443-477).
  - [47] Addula, S. R., Meduri, K., Nadella, G. S., & Gonaygunta, H. (2024). AI and Blockchain in Finance: Opportunities and Challenges for the Banking Sector. *International Journal of Advanced Research in Computer and Communication Engineering*, *13*(2), 184-190.
  - [48] Addula, S. R., Mamodiya, U., Jiang, W., & Almaiah, M. A. (2025). Generative AI-Enhanced Intrusion Detection Framework for Secure Healthcare Networks in MANETs. *SHIFRA*, *2025*, 62-68.
  - [49] Parasa, G., Nayak, D. K., Gangopadhyay, A., Stanlywit, M., Gokulakrishnan, S., & Sharma, P. (2024). Exploring the Role of Artificial Intelligence in Enhancing Chatbot Functionality. In *2024 1st International Conference on Advances in Computing, Communication*

- and Networking (ICAC2N) (pp. 1647-1651). IEEE.
- [50] Mookambal, M. A., & Gokulakrishnan, S. (2021). Potential subscriber detection using machine learning. In *Image Processing and Capsule Networks: ICIPCN 2020* (pp. 389-396). Springer International Publishing.
- [51] Boggavarapu, S., Navale, G. S., Manikandan, G., Senthilarasi, N., Lakshminarayana, K., & Goyal, H. R. (2024). A novel intelligent AI with automated defense attack data privacy system design. In *Proceedings of the 2024 5th International Conference on Recent Trends in Computer Science and Technology (ICRTCST)* (pp. 99-104). Jamshedpur, India.
- [52] Boggavarapu, S., Ali, S. S., Manikandan, G., Mohanraj, R., Singh, D. P., & R., (2023). Flying neural network-based optimistic financial early alert system in AI model. In *Proceedings of the 2023 6th International Conference on Contemporary Computing and Informatics (IC3I)* (pp. 1367-1373). Gautam Buddha Nagar, India.
- [53] Ahamed, F., Biswal, S., Nanda, S. S., Pundir, S., Soubhari, T., & Boggavarapu, S. (2023). Intelligent unmanned AI detection model for financial volatility in stock exchange. In *Proceedings of the 2023 6th International Conference on Contemporary Computing and Informatics (IC3I)* (pp. 1422-1426). Gautam Buddha Nagar, India.
- [54] Kashyap, G. (2024). AI for threat detection and mitigation: Using AI to identify and respond to cybersecurity threats in real-time. *International Journal of Scientific Research in Engineering and Management Sciences*, 6(6), 1-5.
- [55] Kashyap, G. (2021). AI for information retrieval: Advancements in search engines and chatbots through deep learning-based query understanding. *International Journal of Innovative Research in Creative Technology*, 7(1), 1-7.
- [56] Kashyap, G. (2024). Multilingual NLP: Techniques for creating models that understand and generate multiple languages with minimal resources. *International Journal of Scientific Research in Engineering and Management Sciences*, 6(12), 1-5.
- [57] Srivastava, A. (2023). Impact of AI on social media and its implication on mental health. *International Journal of Scientific Research in Engineering and Management*, 7(7), 1-7.
- [58] Srivastava, A. (2022). WFH impact on work culture and future of workplace. *International Journal of Innovative Research in Creative Technology*, 8(6), 1-8.
- [59] Rahman, M. T., Saha, G. C., Hasanath, M. A., & Uddin, M. N. (2022). Potential Utilization of Textile Dyeing Sludge, Pet Granules, and Fly Ash in Lightweight Concrete Block. In *Advances in Civil Engineering: Select Proceedings of ICACE 2020* (pp. 55-63). Springer Singapore.
- [60] Uddin, M. N., Saha, G. C., Hasanath, M. A., Rahman, M. T., & Rashid, M. M. (2021). Development and characterization of novel Mn-Fe-Sn ternary nanoparticle by sol-gel technique. In *Proceedings of the 5th International Conference on Advanced Civil Engineering (ICACE 2020)* (pp. EE 29-34). Chattogram: CUET.
- [61] Hasanath, M. A., Uddin, M. N., & Ashraf, M. (2021). Fabrication of eco-friendly water purifier by pedaling energy. In *Proceedings of the 5th International Conference on Advanced Civil Engineering (ICACE 2020)* (pp. EE 29-34). Chattogram: CUET.
- [62] Hasanath, M. A., Uddin, M. N., & Saha, G. C. (2021). Assessment of beverage sludge as agricultural soil. In *Proceedings of the 5th International Conference on Advanced Civil Engineering (ICACE 2020)* (pp. EE 254-260). Chattogram: CUET.
- [63] Rahman, M. T., Saha, G. C., Hasanath, M. A., & Uddin, M. N. (2021). Potential use of dyeing sludge, pet granules and fly ash in lightweight concrete block. In *Proceedings of the 5th International Conference on Advanced Civil Engineering (ICACE 2020)* (pp. EE 254-260). Chattogram: CUET.
- [64] Nair, S. S., Lakshmikanthan, G., Belagalla, N., Belagalla, S., Ahmad, S. K., & Farooqi, S. A. (2025). Leveraging AI and machine learning for enhanced fraud detection in digital banking system: A comparative study. In *Proceedings of the 2025 First International Conference on Advances in Computer Science, Electrical, Electronics, and Communication Technologies (CE2CT)* (pp. 1278-1282). Bhimtal, Nainital, India.
- [65] Nair, S. S., Lakshmikanthan, G., Partha Sarathy, J., Singh, D. P., Shanmugakani, K., & Jegajothi, B. (2025). Enhancing cloud security with machine learning: Tackling data breaches and insider threats. In *Proceedings of the 2025 International Conference on Electronics and Renewable Systems (ICEARS)* (pp. 912-917). Tuticorin, India.
- [66] Lakshmikanthan, G., Nair, S. S., Partha Sarathy, J., Singh, S., Santiago, S., & Jegajothi, B. (2024). Mitigating IoT botnet attacks: Machine learning techniques for securing connected devices. In *Proceedings of the 2024 International Conference on Emerging Research in Computational Science (ICERCS)* (pp. 1-6). Coimbatore, India.
- [67] Lakshmikanthan, G., & Nair, S. S. (2020). Zero trust architecture: Redefining security parameters for remote-first organizations. *International Research Journal of Modernization in Engineering Technology and Science*, 2(3), 1003-1013.
- [68] Nair, S. S., & Lakshmikanthan, G. (2021). Open source security: Managing risk in the wake of Log4j vulnerability. *International Journal of Emerging Trends in Computer Science and Information Technology*, 2(4), 33-45.
- [69] Chu, T. S., Nair, S. S., & Lakshmikanthan, G. (2022). Network intrusion detection using advanced AI models: A comparative study of machine learning and deep learning approaches. *International Journal of Communication Networks and Information Security*, 14(2), 359-365.
- [70] Aravindhan, R., Shanmugalakshmi, R., Ramya, K., & Selvan, C. (2016). Certain investigation on web application security: Phishing detection and phishing target discovery. In *Proceedings of the 2016 3rd International Conference on Advanced Computing and Communication Systems (ICACCS)* (pp. 1-10). Coimbatore, India.
- [71] Aravindhan, R., & Shanmugalakshmi, R. (2013). Comparative analysis of Web 3.0 search engines: A survey report. In *Proceedings of the 2013 International Conference on Advanced Computing and Communication Systems* (pp. 1-6). Coimbatore, India.
- [72] Aravindhan, R., Shanmugalakshmi, R., & Ramya, K. (2017). Circumvention of nascent and potential Wi-Fi phishing threat using association rule mining. *Wireless Personal Communications*, 94(3), 2331-2361.
- [73] Aravindhan, R., & Shanmugalakshmi, R. (2016). Visual analytics for semantic based image retrieval (SBIR): Semantic tool. *International Journal of Latest Trends in Engineering and Technology*, 7(2), 300-312.
- [74] Aravindhan, R., & Shanmugalakshmi, R. (2017). Multistage fuzzy classifier based phishing detection using LDA and CRF features followed by impersonated entity discovery. *International Journal of Control Theory and Applications*, 10(29), 33-42.
- [75] Selvan, C., Raganathan, A., & Ashwinkumar, U. M. (2024). Mitigating phishing threats in unmanned aircraft systems (UAS) through multi-stage defense strategies. In *Analyzing and mitigating security risks in cloud computing* (pp. 125-162). IGI Global.
- [76] Vadisetty, R., & Polamarasetti, A. (2024). Generative AI for cyber threat simulation and defense. In *2024 12th International Conference on Control, Mechatronics and Automation (ICCA)* (pp. 272-279).
- [77] Vadisetty, R., & Polamarasetti, A. (2024). Gen AI for real-time traffic prediction and autoscaling in cloud computing education 4.0. In *2024 13th International Conference on System Modeling & Advancement in Research Trends (SMART)* (pp. 735-741).
- [78] Vadisetty, R., & Polamarasetti, A. (2024). Quantum computing for cryptographic security with artificial intelligence. In *2024 12th International Conference on Control, Mechatronics and Automation (ICCA)* (pp. 252-260).
- [79] Vadisetty, R., & Polamarasetti, A. (2024). AI-augmented skill development roadmaps: Tailoring 12-month learning paths for future-ready careers in education 4.0 and industry 4.0. In *2024 13th International Conference on System Modeling & Advancement in Research Trends (SMART)* (pp. 655-661).
- [80] Lilhore, U. K., Dutt, V., Kumar, T. A., Margala, M., & Raahemifar, K. (Eds.). (2025). *Math Optimization for Artificial Intelligence: Heuristic and Metaheuristic Methods for Robotics and Machine Learning* (Vol. 2). Walter de Gruyter GmbH & Co KG.
- [81] Ode, M. S. D. A., Roy, J. D. K., Ghosh, M. M. C. B., & Abhrange, R. S. D. A. B. (2024). *AI & ChatGPT tools for teaching learning process*. Redshine Publication.
- [82] Vadishetty, R. (2025). Efficient deep fake detection technique on video and audio dataset using deep learning. In *Proceedings of 5th International Ethical Hacking Conference* (pp. 137-155).
- [83] William, P., Shamim, M., Yeruva, A. R., Gangodkar, D., Vashisht, S., & Choudhury, A. (2022). Deep learning based drowsiness detection and monitoring using behavioural approach. In *2022 2nd international conference on technological advancements in computational sciences (ICTACS)* (pp. 592-599). IEEE.
- [84] Sureshkumar, S., Jadhav, S., Yeruva, A. R., Wirayasa, I. K. A., Mishra, K. N., & Islam, A. U. (2024). Designing and Improving a Real-Time Trust-Based Security System for IoT Healthcare Monitoring. In *2024 OPJU International Technology Conference (OTCON) on Smart Computing for Innovation and Advancement in Industry 4.0* (pp. 1-5). IEEE.

- [85] Sreenivasu, S. V. N., Sathesh Kumar, T., Bin Hussain, O., Yeruva, A. R., Kabat, S. R., & Chaturvedi, A. (2023). Cloud based electric vehicle's temperature monitoring system using IOT. *Cybernetics and Systems*, 1-16.
- [86] Kumar, T. V., Yeruva, A. R., Kumar, S., Gangodkar, D., Rao, A. L. N., & Chaturvedi, P. (2022). A new vehicle tracking system with R-CNN and random forest classifier for disaster management platform to improve performance. In *2022 2nd International Conference on Technological Advancements in Computational Sciences (ICTACS)* (pp. 797-804). IEEE.
- [87] Basavegowda Ramu, V., & Yeruva, A. R. (2023). Optimising AIOps system performance for e-commerce and online retail businesses with the ACF model. *International Journal of Intellectual Property Management*, 13(3-4), 412-429.
- [88] Basavegowda Ramu, V., & Yeruva, A. R. (2023). The capability of observing performance in healthcare systems. In *EAI/Springer Innovations in Communication and Computing* (pp. 541-548). Springer, Cham, Switzerland.
- [89] Abdulrahman, S. M., Asaad, R. R., Ahmad, H. B., Hani, A. A., Zeebaree, S. R., & Sallow, A. B. (2024). Machine learning in nonlinear material physics. *Journal of Soft Computing and Data Mining*, 5(1), 122-131.
- [90] Abdulrahman, S. M., Hani, A. A., Zeebaree, S. R., Asaad, R. R., Majeed, D. A., Sallow, A. B., & Ahmad, H. B. (2024). Intelligent home IoT devices: An exploration of machine learning-based networked traffic investigation. *Journal of Ilmiah Ilmu Terapan Universitas Jambi*, 8(1), 1-10.
- [91] Ahmad, H. B., Asaad, R. R., Almufti, S. M., Hani, A. A., Sallow, A. B., & Zeebaree, S. R. (2024). Smart home energy saving with big data and machine learning. *Journal of Ilmiah Ilmu Terapan Universitas Jambi*, 8(1), 11-20.
- [92] Almufti, S. M., Ahmad, H. B., Marqas, R. B., & Asaad, R. R. (2021). Grey wolf optimizer: Overview, modifications and applications. *International Research Journal of Science, Technology, Education, and Management*, 1(1), 1-1.
- [93] Almufti, S., Asaad, R., & Salim, B. (2018). Review on elephant herding optimization algorithm performance in solving optimization problems. *International Journal of Engineering & Technology*, 7(1), 6109-6114.
- [94] Almufti, S., Marqas, R., & Asaad, R. (2019). Comparative study between elephant herding optimization (EHO) and U-turning ant colony optimization (U-TACO) in solving symmetric traveling salesman problem (STSP). *Journal of Advanced Computer Science & Technology*, 8(2), 32-37.
- [95] Sallow, B., Asaad, R. R., Ahmad, H. B., Abdulrahman, S. M., Hani, A. A., & Zeebaree, S. R. M. (2024). Machine learning skills to K-12. *Journal of Soft Computing and Data Mining*, 5(1), 132-141.
- [96] Asaad, R. R., Abdulrahman, S. M., & Hani, A. A. (2017). Advanced encryption standard enhancement with output feedback block mode operation. *Academic Journal of Nawroz University*, 6(3), 1-10.
- [97] Asaad, R. R., Abdurahman, S. M., & Hani, A. A. (2017). Partial image encryption using RC4 stream cipher approach and embedded in an image. *Academic Journal of Nawroz University*, 6(3), 40-45.
- [98] Hani, A., Sallow, A. B., Ahmad, H. B., Abdulrahman, S. M., Asaad, R. R., Zeebaree, S. R. M., & Majeed, D. A. (2024). Comparative analysis of state-of-the-art classifiers for Parkinson's disease diagnosis. *Journal of Ilmiah Ilmu Terapan Universitas Jambi*, 8(2), 409-423.
- [99] Ihsan, R. R., Almufti, S. M., Ormani, B. M., Asaad, R. R., & Marqas, R. B. (2021). A survey on cat swarm optimization algorithm. *Asian Journal of Research in Computer Science*, 10(2), 22-32.
- [100] Basavegowda Ramu, V., & Yeruva, A. R. (2024). Unsupervised strategies in detecting log anomalies using AIOps monitoring to amplify performance by PCA and ANN systems. *International Journal of Critical Infrastructures*, 20(4), 356-371.
- [101] Samudrala, V., Yeruva, A. R., Jayapal, N., Vijayakumar, T., Rajkumar, M., & Razia, S. (2022). Smart water flow monitoring and theft detection system using iot. In *2022 International Conference on Automation, Computing and Renewable Systems (ICACRS)* (pp. 239-245). IEEE.
- [102] Bala, S., Singh, G., & Kaur, M. (2024). Mindfulness of functional foods in cancer prevention and health promotion: A comprehensive review. *Revista Electronica De Veterinaria*, 25(1), 1181-1187.
- [103] Bala, S., Singh, G., Arora, R., & Devanshika. (2024). Impact of caffeine consumption on stress management and stamina among university students. *Revista Electronica De Veterinaria*, 25(2), 253-259.