

# D Craft System

Dr.N. Baggyalakshmi, U. Bharani and Dr.R. Revathi

**Abstract---** *The Web Development Internship is a comprehensive program designed to equip aspiring developers with the skills and practical experience required to build dynamic and user-centric websites. Throughout this internship, participants will delve into the exciting world of web development, gaining hands-on experience with modern technologies and frameworks while contributing to real-world projects. Understand the fundamentals of web development, including HTML, CSS, and JavaScript. Explore the role of front-end and back-end development in creating a complete web application.*

**Keywords---** *Web Development, Web Application, D Craft System.*

## I. INTRODUCTION

The use of connected objects in daily life is expanding. Simple linked sensors like thermometers to drones and even automobiles are examples of devices. Globally, these incredibly varied things are referred to as the Internet of Things (IoT). They form interconnected networks such as drone swarms [1], smart homes, smart factories or smart cities.

Huge volumes of data may be shared and new services can be offered thanks to the Internet of Things [2]. But widespread adoption of these devices is necessary to fully reap the benefits of IoT-provided data, and for this to happen, consumers must have enough faith in linked objects. There is a greater attack surface as there are more linked items.

One suggested method for securing such a network is remote attestation. Verifiers and provers are the two types of devices that are established via remote attestation. In order to uphold confidence by demonstrating their integrity, provers are required to provide an attestation to one or more verifiers upon request or on a regular basis [3]. The network is kept safe and compromised devices are eliminated through the use of remote attestation, which compares the firmware of the device on a regular basis to a known good state. Current remote attestation protocols tend to concentrate on particular mechanisms: hardware protocols with strict hardware requirements, software protocols that work on any device, and hybrid techniques that have low hardware requirements but depend on a particular piece of software.

There are other remote attestation frameworks, like

CRAFT [4], which enhance current protocols by adapting to any deployment situation and are, thus, more flexible and secure than standalone remote attestation protocols. These further increase the flexibility and security of remote attestation. There are other remote attestation frameworks, like CRAFT [5], which enhance current protocols by adapting to any deployment situation and are, thus, more flexible and secure than standalone remote attestation protocols. These further increase the flexibility and security of remote attestation.

## II. LITERATURE REVIEW

LeMoult et al [6] The degree to which early life stress (ELS) is linked to an early onset of major depressive disorder (MDD) (i.e., during childhood or adolescent) is unknown, although it is connected with an elevated risk for the development of MDD in adulthood. We calculated the relationships between ELS and the chance of developing MDD before the age of 18 in this meta-analysis. We also looked at the relationships between the risk for youth-onset MDD and eight distinct forms of ELS, including emotional abuse, physical abuse, poverty, physical illness/injury, death of a family member, domestic violence, and natural disasters. TO carried out a thorough search of academic databases to find research that evaluated ELS in addition to the existence or absence of MDD prior to the age of 18.

Grell-Brisk [7] Black Lives Matter! is a demand that Black humanity be seen, acknowledged, and accorded without reservation as well as a categorical cry that Black people are human. However, the very notion that Black people are not automatically human is a scathing critique of modern cultures and the ostensibly liberating ideologies of liberal democracy and humanism. It is a critique of how we define and build the human race itself. We wouldn't need to tell people again how important it was for Black people to be human, if that were the case. Black people are perceived as less than completely human and disposable.

Damnjanović et al [8] Our study's objective was to map the role—promotive, protective, risky, and vulnerable—of a number of psychological factors in a person's intention to get vaccinated in relation to various social roles. In the aftermath of the epidemic, we polled three groups of people: parents, laypeople, and healthcare professionals (HPs). In all regression models (all  $\beta$ s ranging from -. 128 to -. 983, all  $p < . 01$ ), negative attitudes toward vaccines reduce intention

*Dr.N. Baggyalakshmi, Assistant Professor, Department of Computer Science, PSGR Krishnammal College for Women, Coimbatore. E-mail: baggyanethra@gmail.com*

*U. Bharani, Student, BSC Computer Science, PSGR Krishnammal College for Women, Coimbatore. E-mail: bharaniudayakumar82@gmail.com*

*Dr.R. Revathi, Assistant Professor, Department of Computer Science, Karpagam Academy of Higher Education, Coimbatore. E-mail: ravathilakshay@gmail.com*

to vaccinate. The main findings show that positive vaccination intention has a shared attitudinal core, independent of sample/social role.

Tian et al [9] This work initially proposes a new sort of torsional vibration tool to efficiently regulate the stick-slip vibration of the drill string. Subsequently, the tool-based theoretical model of the drill string system is developed. Next, the PID control approach is used to examine the novel torsional vibration tool's viscosity reduction properties. Lastly, outdoor testing was done to compare with the simulation. The outcomes demonstrate that stick-slip vibration can be decreased with the novel torsional vibration tool.

Fakhri et al [10] emphasized the anticancer effects of edible flowers' phytochemical composition, medicinal uses, and ability to modulate oxidative stress pathways and apoptotic/inflammatory mediators. Promising sources of phytochemicals (such as phenolic compounds, carotenoids, and terpenoids) with a variety of medicinal applications are edible flowers. They have beneficial effects on the heart and nervous system, as well as being anti-inflammatory, anti-diabetic, anti-microbial, anti-depressant, anxiolytic, and neuroprotective. By focusing on erythroid nuclear transcription factor-2/extracellular signal-regulated kinase/mitogen-activated protein kinase (Nrf2/ERK/MAPK), reactive oxygen species (ROS), nitric oxide (NO), malondialdehyde (MDA), and antioxidant response elements (AREs), edible flowers may be able to modulate oxidative stress.

### III. PROPOSED METHODOLOGY

The existing physical id systems include paper works for almost all the works such as details about school id, business id, college id etc. Every record Implement a user authentication system to ensure secure access to the management system

- Define user roles and permissions to control access levels for different actions and features within the system.
- It should be entered with a document form.

They are some key aspects of id's existing management capabilities:

#### File Organization

you can create folders and subfolders within the application to organize your files.

You can also use the "Collections" feature to group related files together for easier access.

#### Smart Objects

Smart Objects enable you to embed external files or create linked instances within your document. This feature helps with managing and updating external assets without losing the data's

The proposed system can store a huge amount of data of customers coming to store the id along with the details of

data. Data is stored very effectively as the procedure is category-wise.

The data is about customers, then it will be stored under "Customers" inventory. Likewise, customer details are stored under "Employees" inventory. Hence, all data is effectively managed in the system database.

#### Features

User Authentication and Access Control:

#### Search and Retrieval

- Implement a powerful search functionality to quickly find files based on various criteria, including file name, tags, metadata, and content.
- Provide advanced search filters to narrow down search results.

#### Reporting and Analytics

- Generate reports and analytics on file usage, user activity, and other relevant metrics.
- Gain insights into popular files, user engagement, and overall system performance.

#### Modules in the System

- **Log in and registration:** This allows admin to log in to the system and register the details. The details are to be entered on Login and Registration pages.
- **Customer details:** The customer details should be entered carefully by the user-part of the system.
- **Reports:** After logging in to the system can generate reports and the administrator can view these daily.
- **Bills:** The bills of customers are to be entered and updated.
- **Materials:** Information and details regarding materials are entered and updated on a regular basis.

### IV. SYSTEM SPECIFICATION

Table 1: Hardware Specification

System	Dual core
Hard Disk	160GB
Monitor resolution	1024*768 or higher
keyboard	108 keys
Mouse	Logitech
Ram	1GB

Table 2: Software Specification

Operating System	Windows XP
Server	Wamp Server
Front end	HTML
Back end	Java

V. RESULT AND DISCUSSION

User Page

Login and Register

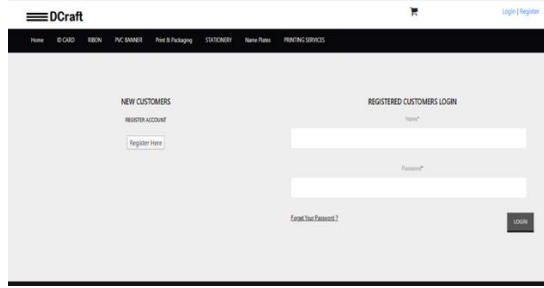


Figure 1: Login and Register

Creating A New Account

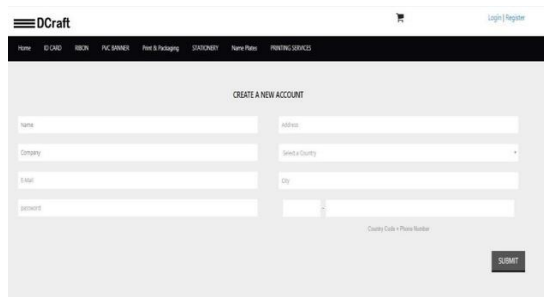


Figure 2: Creating a New Account

The user need create a new account by entering the details like name, address, email, country, city, and create a new password and then submit it.

The new account will be created. Now the user can login any time by this username and password.

Table Design

Table 3: User Details

<b>Id</b>	<b>int</b>	<b>Not null</b>
<b>Name</b>	<b>varchar(50)</b>	<b>Not null</b>
<b>Userid</b>	<b>varchar(25)</b>	<b>Not null</b>
<b>Password</b>	<b>varchar(50)</b>	<b>Not null</b>
<b>emailid</b>	<b>varchar(50)</b>	<b>Not null</b>

Table 4: User Personal Details

<b>id</b>	<b>int</b>	<b>Not null</b>
<b>Gender</b>	<b>varchar(50)</b>	<b>Not null</b>
<b>Address</b>	<b>varchar(50)</b>	<b>Not null</b>
<b>Contact no</b>	<b>number(10)</b>	<b>Not null</b>
<b>City</b>	<b>varchar(25)</b>	<b>Not null</b>

Order

Table 5: Order details

<b>Productid</b>	<b>int</b>	<b>Not null</b>
<b>Name</b>	<b>varchar(50)</b>	<b>Not null</b>
<b>type</b>	<b>varchar(50)</b>	<b>Not null</b>
<b>color</b>	<b>varchar(50)</b>	<b>Not null</b>
<b>quantity</b>	<b>varchar(50)</b>	<b>Not null</b>
<b>price</b>	<b>varchar(50)</b>	<b>Not null</b>
<b>customerid</b>	<b>varchar(50)</b>	<b>Not null</b>
<b>price</b>	<b>varchar(50)</b>	<b>Not null</b>

Table 6: Customer Details

<b>customername</b>	<b>varchar(50)</b>	<b>Not null</b>
<b>Mobile no</b>	<b>number(10)</b>	<b>Not null</b>
<b>Mail id</b>	<b>varchar(50)</b>	<b>Not null</b>

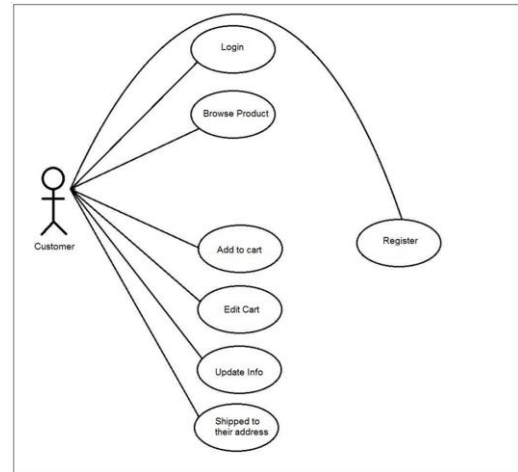


Figure 3: Data Flow Diagram

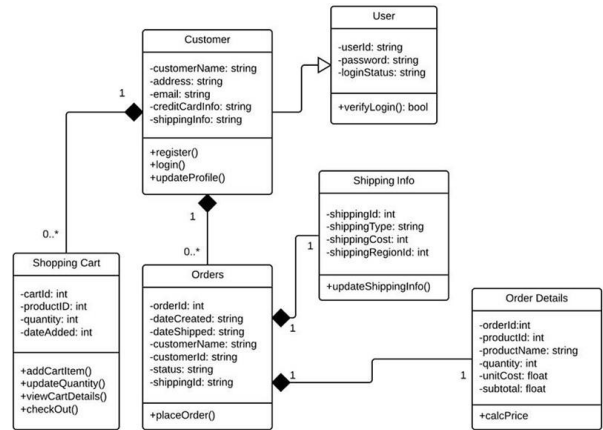


Figure 4: Customer Details

- A user can register as a new member.
- An existing user can log in.
- A user can view all products.
- A user can search for products by category.
- A user can add any product to the cart.
- A user can place an order for shipping to his address.

Product Details

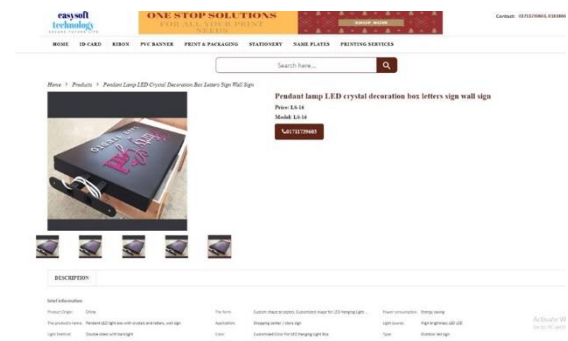


Figure 5: Product Details

This page displays the product details and its price. The above shows us the product of leddecorative boards in which letters are displayed in it.

### Output Design

A quality output is one that shows the information clearly and complies with the end user's needs. Any system's outputs are how processing results are transmitted to users and othersystems. It is decided during output design how information will be displaced for immediate and as well as the hard copy output. It is the user's most crucial and direct source of information. The interaction between the system and aiding user decision-making is improved by efficient and intelligent output design.

### Order Page

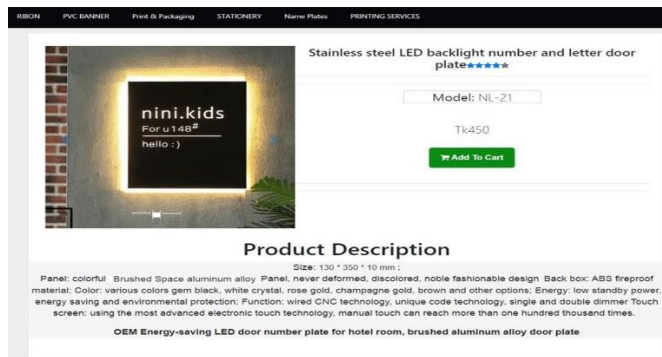


Figure 6: Order Page

### Billing Page

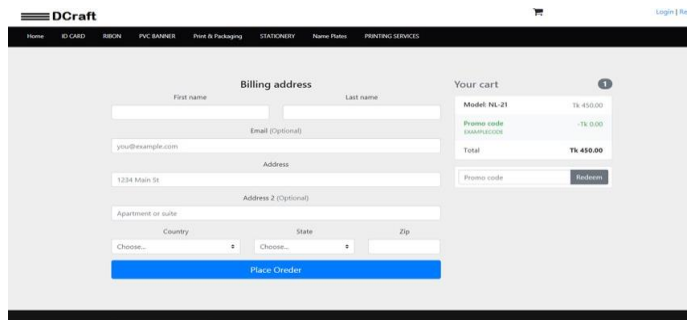


Figure 7: Billing Page

This page shows the Billing address which includes the name, email, address, optional or second address, country, state and after entering the details we can place an order. On the right side of the web page, we can see the product details and its price.

## VI. CONCLUSION

Began as a newbie to the corporate world of data science. I was excited to learn new things. I discovered a lot about myself that is how to be patient, stay positive, on what skills I have to work more upon, and also about how data science principles can be applied to solve healthcare challenges. It was a different experience from being a student to working as a professional in the industry. Applying what I learned in university increased my confidence and the skills I acquired at the internship and knowledge I gained at the

workplace complimented my learnings and enhanced my skills.

## REFERENCE

- [1] B. Vedik., R. Kumar., R. Deshmukh., S. Verma and C.K. Shiva. "Renewable energy-based load frequency stabilization of interconnected power systems using quasi-oppositional dragonfly algorithm", *Journal of Control, Automation and Electrical Systems*, Vol. 32, No. 1, Pp. 227-243, 2021.
- [2] A.S. Hassan., E.A. Elsherpieny and R.E. Mohamed. "Journal of Information and Communication Technology", *Journal of ICT*, Vol. 21, No. 1, Pp. 1-25, 2022.
- [3] C.M.S. Junior., S.M. Cardoso., E.M. Sales., E.S. Velozo., E.K.P. Dos Santosb., G.A.B. Canuto., & R. Biegelmeyer. "Coumarins from Rutaceae: Chemical diversity and biological activities", *Fitoterapia*, 2023.
- [4] A. La Paz., J.M. Merigó., P. Powell., A. Ramaprasad., and T. Syn. "Twenty-five years of the Information Systems Journal: A bibliometric and ontological overview", *Information Systems Journal*, Vol. 30, No. 3, Pp. 431-457, 2020.
- [5] O. Williams., S. Sarre., S.C. Papoulias., S. Knowles., G. Robert., P. Beresford., and V.J. Palmer. "Lost in the shadows: reflections on the dark side of co-production", *Health research policy and systems*, Vol. 18, Pp. 1-10, 2020.
- [6] J. LeMoult., K.L. Humphreys., A. Tracy., J.A. Hoffmeister., E. Ip., and I.H. Gotlib. "Meta-analysis: exposure to early life stress and risk for depression in childhood and adolescence", *Journal of the American Academy of Child & Adolescent Psychiatry*, Vol. 59, No. 7, Pp. 842-855, 2020.
- [7] M. Grell-Brisk. "Blackness, Disposability, and the Black Spirit", *Journal of World-Systems Research*, Vol. 27, No. 1, Pp. 345-355, 2021.
- [8] K. Damnjanović., S. Ilić., M. Kušić., M. Lazić., and D. Popovic. "Promotive and Risk Psychological Factors of Intention to Vaccinate in Health-Care Providers, Parents, and Laypeople: To Be Safe Is to Trust", Pp. 1-22, 2023.
- [9] J. Tian., Y. Zhou., L. Yang., and S. Hu. "Analysis of stick-slip reduction for a new torsional vibration tool based on PID control", *Proceedings of the Institution of Mechanical Engineers, Part K: Journal of Multi-body Dynamics*, Vol. 234, No. 1, Pp. 82-94, 2020.
- [10] S. Fakhri., M. Tomas., E. Capanoglu., Y. Hussain., F. Abbaszadeh., B. Lu., and H. Khan. "Antioxidant and anticancer potentials of edible flowers: where do we stand?", *Critical Reviews in Food Science and Nutrition*, Vol. 62, No. 31, Pp. 8589-8645, 2022.